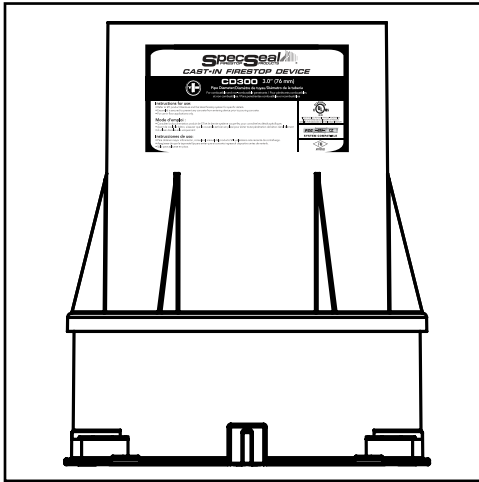




CAST IN FIRESTOP DEVICE

APPLICATIONS

SpecSeal® Cast-In Firestop Devices are engineered for use in concrete floors to form firestopped openings for various through penetrating items including plastic or metal pipes, cables, and insulated pipes.



PRODUCT DESCRIPTION

SpecSeal® Cast-In Firestop Devices consist of molded plastic sleeves incorporating an intumescent firestopping system and flexible smoke and water resistant seal secured with a steel retaining plate system. The molded plastic body can be easily cut as required to accommodate concrete thickness even in as little as 2-1/2 in. (64 mm) of concrete. The 2, 3, 4 and 6 in. (51, 76, 102 and 152 mm) devices are sized to accommodate pipes ranging from 1-1/2 to 6 in. (38 to 152 mm) trade size.

Accessories are available to adapt SpecSeal® Cast-In Firestop Devices to other uses. Available accessories include a steel deck kit to facilitate installation in fluted metal deck as well as extension tubes to lengthen the device for situations where the floor thickness is greater than 8 in. (204 mm).

FEATURES

- Easy installation, eliminates core drilling
- Pipes can be installed from top or bottom
- Integral water and smoke resistant gasket
- Color coded for easy identification. Red for combustible or noncombustible penetrants; black for noncombustible penetrants
- Factory-metered dose of intumescence; eliminates guess work

PERFORMANCE

SpecSeal® Cast-In Firestop Devices have been successfully tested in accordance with ASTM E814 (ANSI/UL1479) in one, two, and three hour fire-rated floor assemblies. Consult factory for individual system designs and application requirements.

SPECIFICATIONS

The firestop system shall be a molded plastic sleeve supplied with an intumescent firestopping system with an integral water and smoke resistant seal. The device shall be installed in accordance with the manufacturer's written instructions. The device shall also be classified by Underwriters Laboratories Inc. (UL) as a through-penetration firestop device when tested to ASTM E814 (ANSI/UL1479) for up to a 3 hr rating.

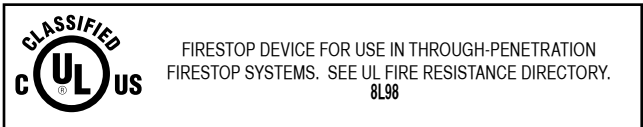
PHYSICAL PROPERTIES

Table A:

PROPERTIES	CAST-IN FIRESTOP DEVICE
Shell Construction:	Polypropylene
Expansion Begins:	320° F (160° C)
Volume Expansion:	250X (free expansion)
In Service Temperature:	130° F (54° C)
Shelf Life	None
Standard Height	8 in. (203 mm)

Table B:

DIMENSIONS			
ID (in. mm)	Device Footprint (in. mm)	Deck Plate Footprint (in. mm)	Nom. Steel Deck Opening Size (in. mm)
2 (51)	5-1/8 x 5-1/8 (131 x 131)	5-1/8 x 10-3/8 (131 x 264)	3-5/8 (93)
3 (76)	5-3/4 x 5-3/4 (146 x 146)	5-3/4 x 11 (146 x 280)	4-1/4 (108)
4 (102)	6-3/4 x 6-3/4 (172 x 172)	6-3/4 x 12 (172 x 305)	5-1/4 (134)
6 (152)	9 x 9 (229 x 229)	9 x 15 (229 x 381)	7-1/4 (184)

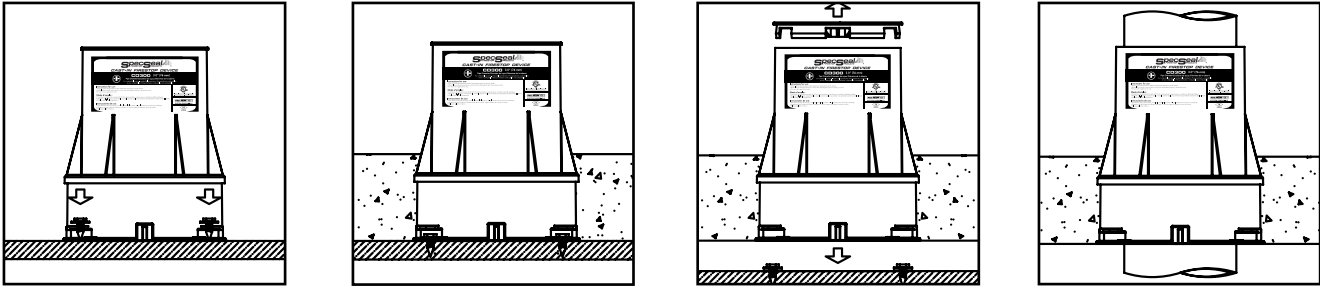


SPECIFIED DIVISIONS		
Division	Section	Title
3	03 11 00	Concrete Forming
3	03 30 00	Cast-in-Place Concrete
7	07 84 00	Firestopping



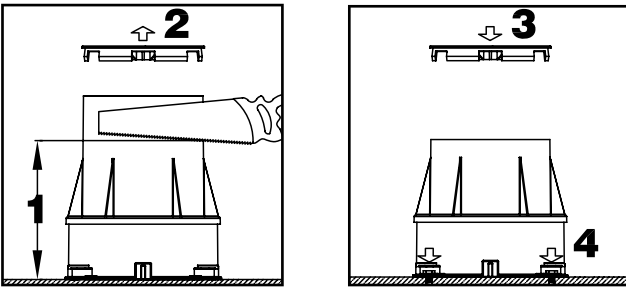
INSTALLATION INSTRUCTIONS

The following steps represent a typical installation for SpecSeal® Cast-In Firestop Devices. See Table B for physical dimensions. Consult installation instructions for more specific information.

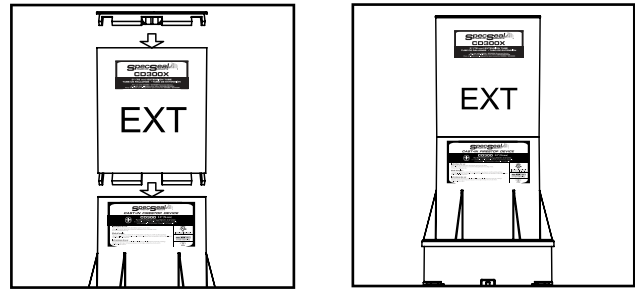


OPTIONAL INSTALLATION INSTRUCTIONS

Cast-In Firestop Device may be cut to slab thickness prior to installation.

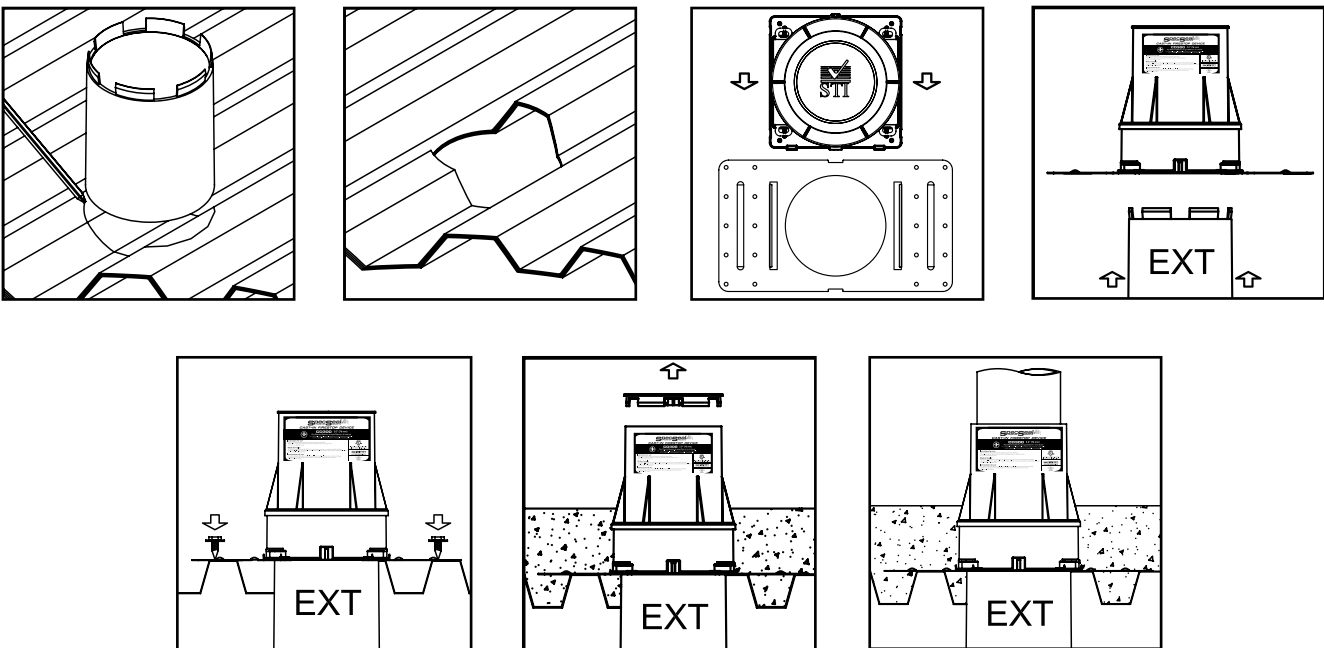


Extension may be added for thicker concrete flooring



CONCRETE OVER STEEL DECK

Use appropriate Cast-In Firestop Device (see table above) with listed accessory per instructions included with products.

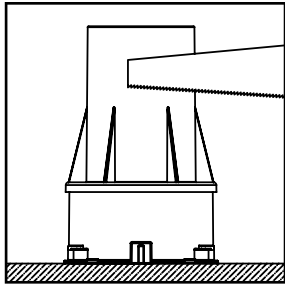


DO NOT USE DEVICE FOR WALL APPLICATIONS

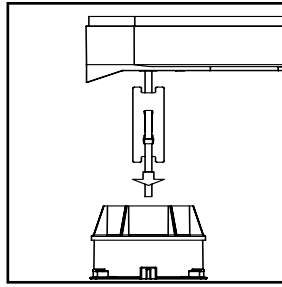


TUB BOX INSTALLATION

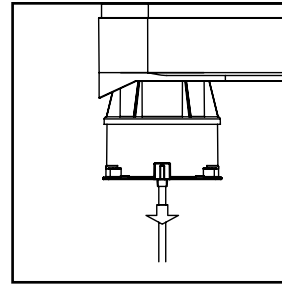
The following steps represent a typical installation for SpecSeal® Cast-In Firestop Devices. See Table B for physical dimensions. Consult installation instructions for more specific information.



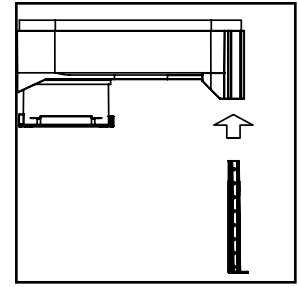
Cut firestop device sleeve as required to position top of tub box pan flush with concrete pour. Overall height of tub box assembly is 11 in. (279 mm). Subtracting concrete pour thickness determines amount of sleeve to be removed. Example, 6 in. (152 mm) concrete floor requires installer to cut 5 in. (127 mm) off top of sleeve.



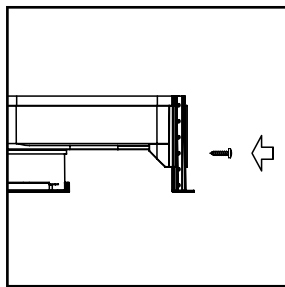
Position tub box atop firestop device sleeve and insert zip tie/holding bar through center of firestop device. Remove the tape to position bar horizontally.



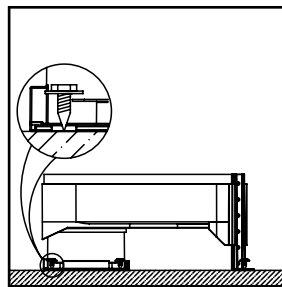
Align top of device with round flange on bottom of tub box pan. Pull zip tie tight until device and tub box pan firmly lock together.



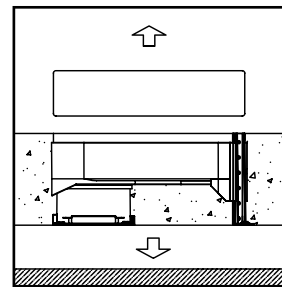
Slide legs into position on tub box pan and adjust to height of pour.



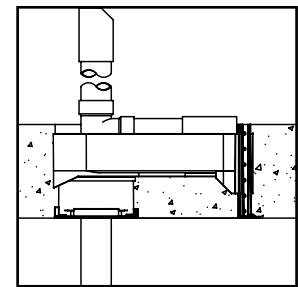
Secure legs in position by driving two steel screws through bottom most holes lining up with tub box pan. When legs project above tub box pan, trim flush if desired.



Fasten completed tub box assembly to floor deck using nails or screws (not provided) and pour concrete.



Remove foam insert and form boards.



Install tub drain/overflow assembly piping (plastic or brass) with associated branch and p-trap piping as required.

MAINTENANCE

Installations should be inspected periodically for subsequent damage. Any damage should be repaired using SpecSeal® products.

TECHNICAL SERVICE

Specified Technologies Inc. provides toll free technical support to assist in product selection and appropriate installation design. UL Systems, Material Safety Data Sheets and other technical information is available at the Technical Library at www.stifirestop.com.

PRECAUTIONARY INFORMATION

No unusual hazards are known or expected. Observe normal safety procedures during installation.



AVAILABILITY

SpecSeal® Cast-In Firestop Devices are available from authorized STI distributors worldwide. Visit www.stifirestop.com or call 800.992.1180 for information concerning where to purchase these and other STI products.

ORDERING INFORMATION		
CATALOG NO.	DESCRIPTION	CASE QUANTITY
Devices for Combustible and Noncombustible Penetrants		
CD200	2" (51 mm) Trade Size Cast-In Firestop Device	6
CD300	3" (76 mm) Trade Size Cast-In Firestop Device	6
CD400	4" (102 mm) Trade Size Cast-In Firestop Device	6
CD600	6" (152 mm) Trade Size Cast-In Firestop Device	6
Devices for Noncombustible Penetrants		
CD200M	2" (51 mm) Trade Size Cast-In Firestop Device	6
CD300M	3" (76 mm) Trade Size Cast-In Firestop Device	6
CD400M	4" (102 mm) Trade Size Cast-In Firestop Device	6
CD600M	6" (152 mm) Trade Size Cast-In Firestop Device	6
Extension Tubes		
CD200X	2" (51 mm) Trade Size Extension Tube	6
CD300X	3" (76 mm) Trade Size Extension Tube	6
CD400X	4" (102 mm) Trade Size Extension Tube	6
CD600X	6" (152 mm) Trade Size Extension Tube	6
Deck Adapter Kits		
CD200DK	2" (51 mm) Trade Size Metal Deck Adapter	6
CD300DK	3" (76 mm) Trade Size Metal Deck Adapter	6
CD400DK	4" (102 mm) Trade Size Metal Deck Adapter	6
CD600DK	6" (152 mm) Trade Size Metal Deck Adapter	6
Tub Box Kit		
CD200T	2" (51 mm) Trade Size Tub Box Kit	1

IMPORTANT NOTICE: All statements, technical information, and recommendations contained herein are based upon testing believed to be reliable, but the accuracy and completeness thereof is not guaranteed.

WARRANTY: Specified Technologies Inc. manufactures its goods in a manner to be free of defects. Should any defect occur in its goods (within one year), Specified Technologies Inc., upon prompt notification, will at its option, exchange or repair the goods or refund the purchase price.

LIMITATIONS AND EXCLUSIONS: THIS WARRANTY IS IN LIEU OF ALL OTHER REPRESENTATIONS EXPRESSED OR IMPLIED (INCLUDING THE IMPLIED WARRANTIES OF MERCHANTABILITY OR FITNESS FOR USE) AND UNDER NO CIRCUMSTANCES SHALL SPECIFIED TECHNOLOGIES INC. BE RESPONSIBLE FOR ANY INCIDENTAL OR CONSEQUENTIAL PROPERTY DAMAGE OR LOSSES. PRIOR TO USE, THE USER SHALL DETERMINE THE SUITABILITY OF THE PRODUCT FOR ITS INTENDED USE, AND THE USER ASSUMES ALL RISKS AND LIABILITY FOR SUBSEQUENT USE.

No statement or recommendation not contained herein shall have any force or effect unless in an agreement signed by officers of seller and manufacturer.

STI is a member of the following organizations:



 Specified Technologies Inc.
STI THE FIRESTOP AUTHORITY

200 Evans Way • Somerville, NJ 08876 | Toll Free: 800-992-1180 • F: 908.526.9623